

BD SurePath™ Pap test technology is changing cervical cancer screening for the better.

BD SurePath™ Pap test unique collection device(s) all have detachable heads so you get more of the sample everytime.¹

BD SurePath™ Pap test is easy to use:

step

1. Collect

Collect the cytology sample using either a broom-like device or combination brush/plastic spatula with detachable heads. Follow manufacturer's collection instructions for detachable head device(s).



- > Since the heads of these devices are detached and deposited into the vial, 100% of the collected sample can be sent to the lab for processing.
- > Alternatively, a rinse and swirl technique can result in discarding on average 37% of the sample collected during cell transfer¹, which could mean the difference between finding an abnormality and missing it.

step

2. Drop

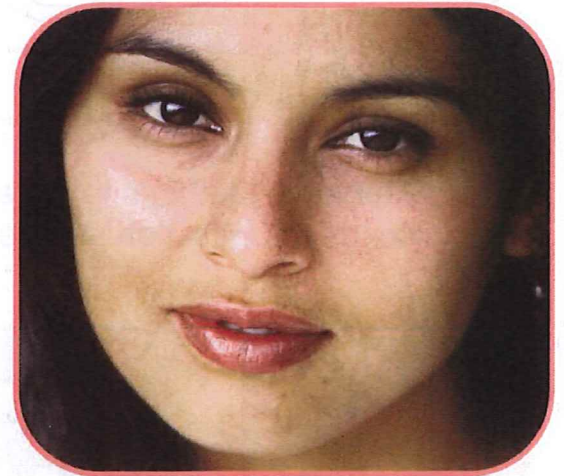
Use the interior rim of the BD SurePath™ Collection vial to pull off the head of the broom-like device into the large opening in the collection vial.



step

3. Send

Place the cap on the vial and tighten. Send the BD SurePath™ vial to the lab for processing



BD SurePath™ test is the only Pap test available today with a 64.4% increase in HSIL+ detection.²



Helping all people
live healthy lives

¹ Bigras G et al. *Journal of Lower Genital Tract Disease*, Vol. 7(3), 2003: 168-174.

² Compared to conventional Pap smear. See BD PrepStain™ Slide Processor package insert, Direct-to-Vial study population, Table 26 for these clinical sites and these study populations. Note: *Site to site variations in performance are expected.*

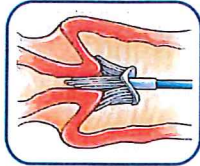
BD SurePath™ test is easy to use with several collection device choices.

Option 1

BD SurePath™ Test Sample Collection with Broom-type Detachable Head Device.³

1. Collect

Insert the Rovers Cervex-Brush® into the endocervical canal. Rotate brush five times in a clockwise direction.



2. Drop

Use the interior rim of the BD SurePath™ Collection vial to pull off the head of the broom-like device into the large opening in the collection vial.

DO NOT insert collection device head into the smaller opening in the vial.



3. Send

Place the cap on the vial and tighten. Send the BD SurePath™ vial to the lab for processing.



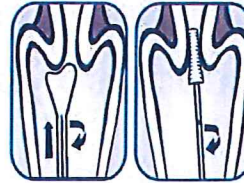
Contraindication: The Cervex-Brush® should not be used on patients after the first 10 weeks of pregnancy.

Option 2

BD SurePath™ Test Sample Collection with Combination Brush/Plastic Spatula Detachable Head Device.⁴

1A. Collect

Insert the contoured end of the Pap Perfect® Plastic spatula and rotate 360° around the entire exocervix.



1B. Collect

Insert Cytobrush® Plus GT into the endocervix until only the bottom-most bristles are exposed at the os. Slowly rotate ¼ to ½ turn in one direction. To reduce unnecessary bleeding, do not over-rotate brush.

2A. Drop

Use the interior rim of the large opening in the BD SurePath™ Collection vial to insert the head of the spatula so the break point is above the top of the light blue vial insert and the head is below the insert. Bend the device back and forth until the device breaks.

DO NOT insert collection device head into the smaller opening in the vial.



2B. Drop

Use the interior rim of the large opening in the BD SurePath™ Collection vial to insert the head of the brush so the break point is above the top of the light blue vial insert and the head is below the insert. Bend the device back and forth until the device breaks.

DO NOT insert collection device head into the smaller opening in the vial.

3A. Next

Place cap on vial; do not tighten cap until Step #3B Send. Go to Cytobrush® Plus GT 'Step #1B. Collect.



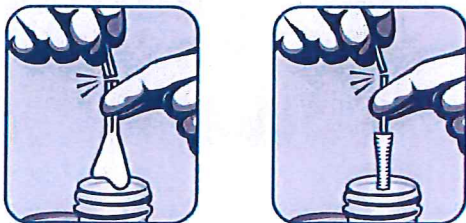
3B. Send

Place the cap on the vial and tighten. Send the BD SurePath™ vial to the lab for processing.

Warning: Do Not Use Cytobrush Plus® GT on pregnant patients or for endometrial sampling. See BD SurePath™ Sample Collection Kit product insert for complete Directions of Use.

Alternative Methods to Detach Heads of Collection Devices:

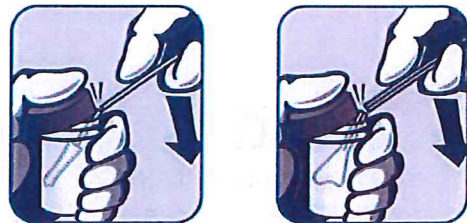
Two-Hand 'SNAP'⁴



Do not touch the head of the device while detaching.

Alternative Methods to Detach Heads of Collection Devices:

Cap-Assisted 'SNAP'⁴



Care must be taken to avoid splashing and/or contamination of the head(s) of the device(s).

³ See Rovers® Cervix-Brush® product insert for complete Directions of Use.

⁴ See BD SurePath™ Sample Collection Kit product insert for complete Directions of Use. Cervix-Brush is a product and registered trademark of Rovers B.V. Oss, The Netherlands. BD SurePath™ Sample Collection Kit is manufactured by Medscand, a Cooper Surgical Company, Trumbull, CT.

Cervix-Brush is a trademark of Rovers Medical Devices, B.V.

CytoBrush and Pap Perfect are trademarks of Cooper Surgical, Inc.

BD, BD Logo and all other trademarks are property of Becton, Dickinson and Company. © 2014 BD 980-05666-00 REV E 09/14



Helping all people
live healthy lives