



## Manumed ST

The budget-friendly Manumed

# Manumed ST

With this cost-effective Manumed examination and treatment couch you can treat anywhere, even without a power source. Because the Manumed ST quality couch is available in an electric and hydraulic version.

With the hydraulic version you don't need a socket! This means you can conduct examinations and provide treatment anywhere, with easy height adjustment. The easy-to-operate foot pedal allows you to adjust the height effortlessly. If you do have access to sockets, the electric version provides complete ease of use. A simple press on the button (or use of the easy all-round operation) adjusts the height effortlessly.

Whichever version you choose, the Manumed ST is a quality couch with a stable, quality frame and fitted with high quality upholstery. Thanks to the geometry of the frame, there is also plenty of legroom under the couch, making seated treatment very comfortable for the specialist. With the optional wheel-raise mechanism the couch can be moved easily and quickly. The Manumed ST is the ideal Manumed at a very attractive price.





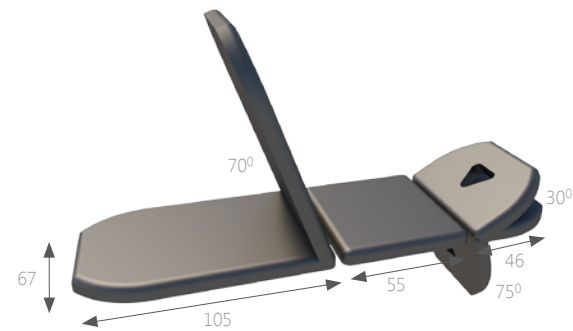
## Manumed ST

- Available as a 2-section or 3-section model
- Available as head part or back part version
- Available with hydraulic or electrical height adjustment
- Available in 6 different upholstery colours
- Many options and accessories
- Very attractive price

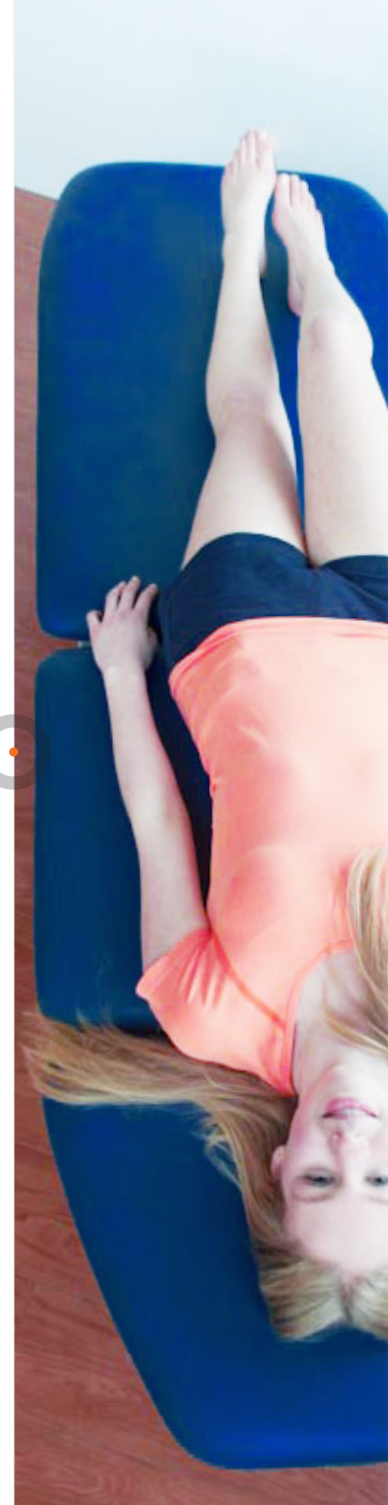
# Manumed ST 3-section

Manumed ST 3-section, hydraulic H/L

Manumed ST 3-section, electric H/L



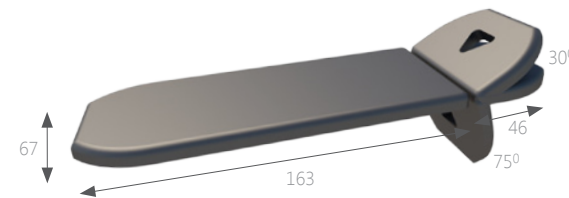
## ORDERING DATA



# Manumed ST 2-section, head-section

Manumed ST 2-section, head-section, hydraulic H/L

Manumed ST 2-section, head-section, electric H/L



## ORDERING DATA

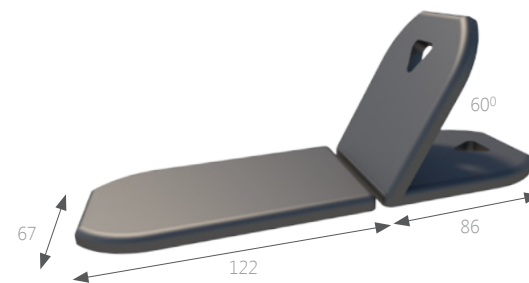


## Manumed ST 2-section, back-section

Manumed ST 2-section, back-section, hydraulic H/L

Manumed ST 2-section, back-section, electric H/L

## ORDERING DATA



# Manumed ST

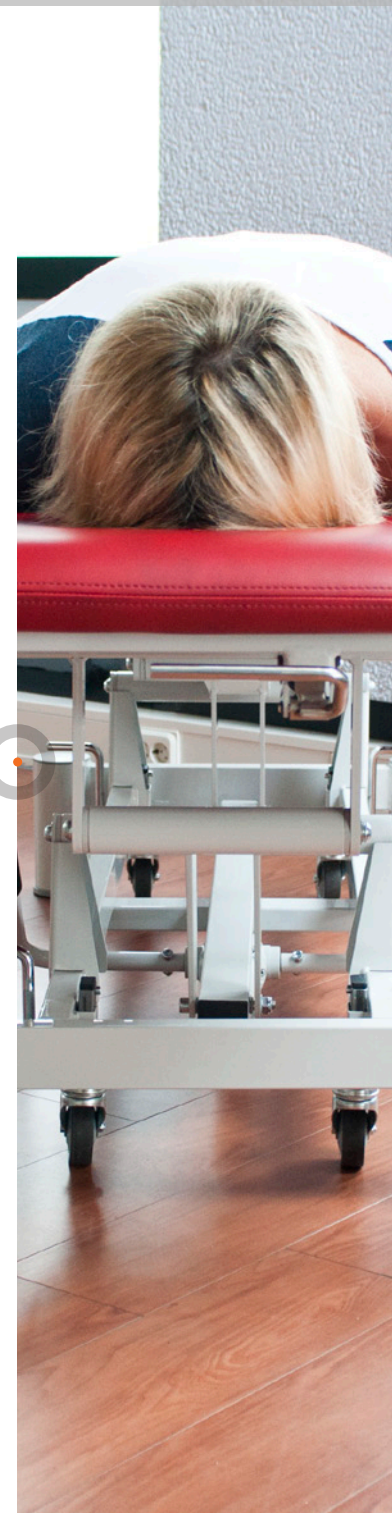
## TECHNICAL SPECIFICATIONS

Size tabletop (lxw):	207 - 209 x 67 cm
Height adjustment:	45-101 cm
Lifting time (min.-max.):	approximately 25 sec.
Lifting capacity:	150 kg
Power supply:	230VAC 50/60 Hz
Current consumption:	1.0 A max.
Force hydraulic pump:	10.000 N

This is a medical device



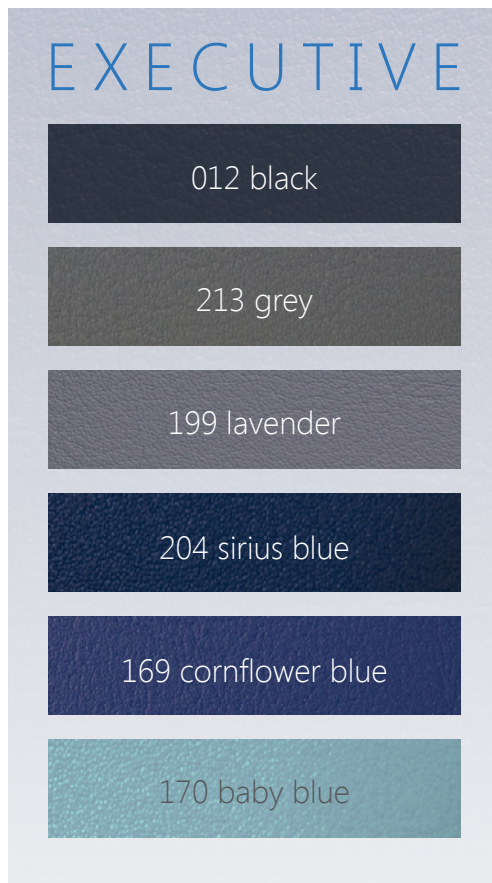
It complies with all applicable medical regulations. For more details please consult the instructions for use (downloadable via [www.enraf-nonus.com](http://www.enraf-nonus.com))



# Manumed ST Colours

OPTIONS<sup>(1)</sup>

A matching Enraf-Nonius couch for every interior. As in other practices, a pleasant ambience is important in physiotherapy practices. Clients must feel comfortable in the room where they are being treated. As each practice is furnished differently and has its own colour scheme, we regard it as important for the treatment couches to fit in with your look and feel. That is why we can manufacture our treatment couches in several upholstery colours. Our imitation leather upholstery contains no phthalates and is flame retardant – a unique combination that makes this material suitable for medical use!



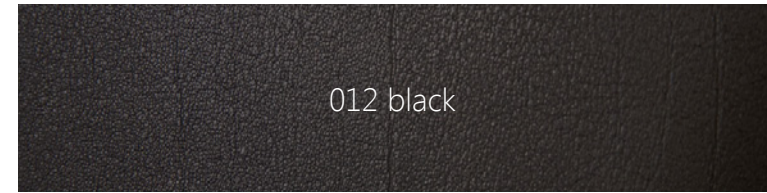
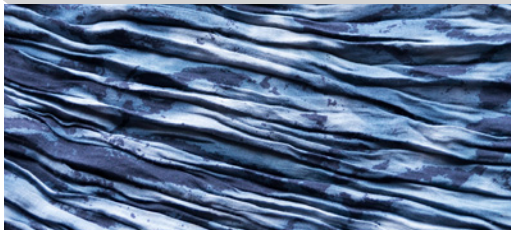
(1) = NOTE: Please order options together with the couch because of modification of the couch during production.





# Manumed ST Couleurs

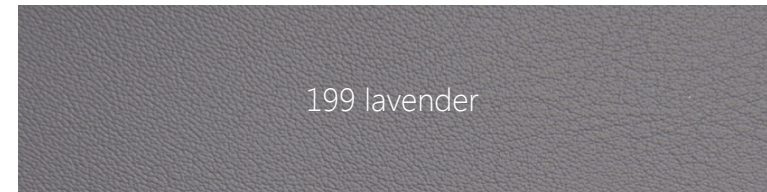
## EXECUTIVE



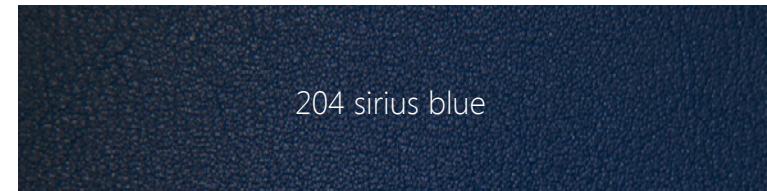
012 black



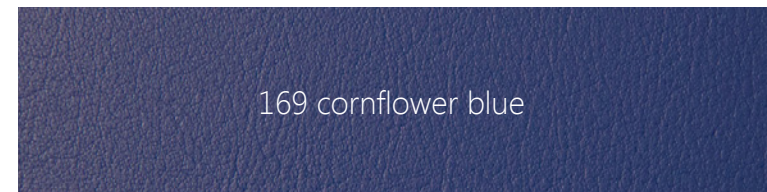
213 grey



199 lavender



204 sirius blue



169 cornflower blue



170 baby blue

# Manumed ST

## Upholstery option

Section Width

67 cm

S = Standard

4 cm thick

S



67 cm

## Height adjustment

- A. Hydraulic
- B. Electric Footswitch (standard)
- C. Electric All-around (optional)
- D. Handswitch (optional)



A



B



C



D

## OPTIONS<sup>(1)</sup>



(1) = NOTE: Please order options together with the couch because of modification of the couch during production

# Manumed ST

## OPTIONS<sup>(1)</sup>

### Lifting capacity

A. Electric - max. 150 kg

B. Hydraulic - max 150 kg



A



B

### Optional features

A. Wheel raising set

B. 1550809 Universal safety switch

C. 1550804 Fold down side support



A



B



C

(1) = NOTE: Please order options together with the couch because of modification of the couch during production



# Manumed ST

## ACCESSORIES

### Paper roll holder and paper rolls

- 3450105 Paper roll holder for Manumed, for 50 & 60 cm rolls, mounted under headsection
- 1550800 Paper roll holder for Manumed ST, for 50 cm rolls, mounted under foot-section
- 3445280 Paper roll holder, stand-alone model
- 3445278 Paper roll, width 50 cm, roll-length 150 m, per 5 rolls
- 3445279 Paper roll, width 60 cm, roll-length 150 m, per 5 rolls



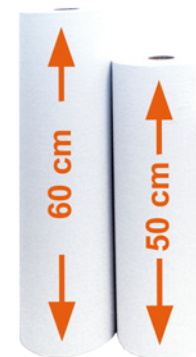
3450105



1550800



3445280



3445278 / 3445279



# Manumed ST

## ACCESSORIES

### Fixation accessories

- 1550815 Fixation horn, black<sup>(1)</sup> (set of 2)
- 1550806 Fixation rail for fixation horn shoulder, armpit (and for gynaecological set)
- 1550807 Fixation rail for fixation horn armpit (or for gynaecological set)
- 1550808 Fixation rail for fixation horn shoulder.



1550815



1550806



1550807



1550808

(1) = Requires 1550806, 1550807 or 1550808



# Manumed ST

## ACCESSORIES

### Fixation straps

- 3445023 Fixation strap with velcro fastener 120 cm
- 3445014 Fixation strap with velcro fastener 160 cm
- 3445015 Fixation strap with velcro fastener 240 cm
- 3445475 Fixation strap with safety lock 250 cm
- 3445474 Fixation strap with safety lock 350 cm



3445023



3445014 / 3445015



3445474 / 3445475



# Stools

- 3xxx010 Stool, height adjustable 40-53 cm
- 3xxx011 Stool, mobile, height adjustable 59-85 cm
- 3xxx012 Stool, mobile, provided with footrest, height adjustable 59-85 cm
- 3xxx013 Stool, mobile, anatomic seat, height adjustable 43-56 cm
- 3xxx020 Stool, mobile, saddle seat, height adjustable 59-85 cm



3xxx010



3xxx011



3xxx012


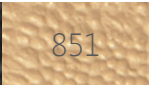
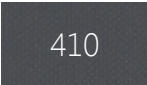
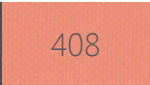
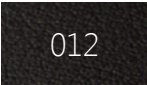
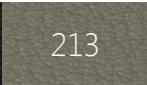

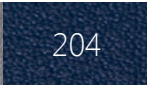
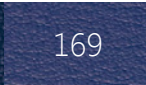



3xxx013

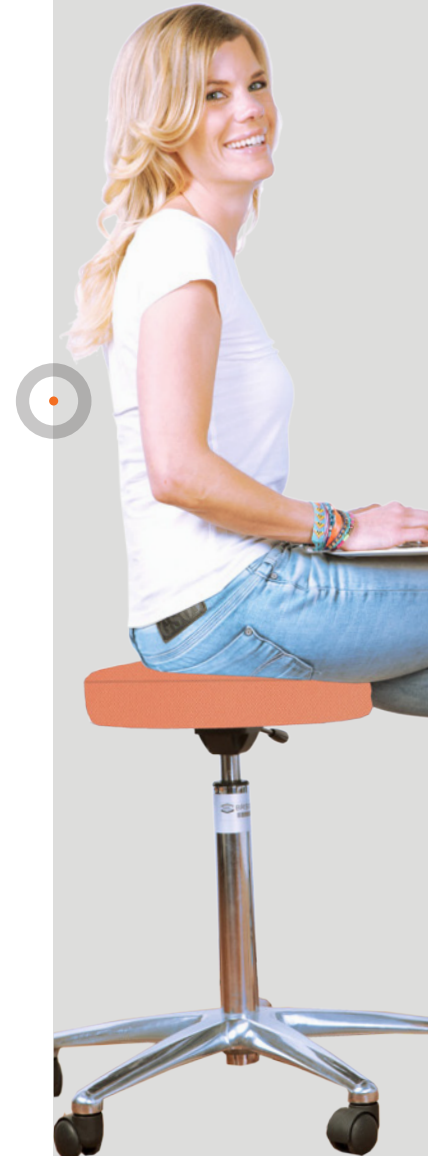


3xxx020

Available in all colours shown below

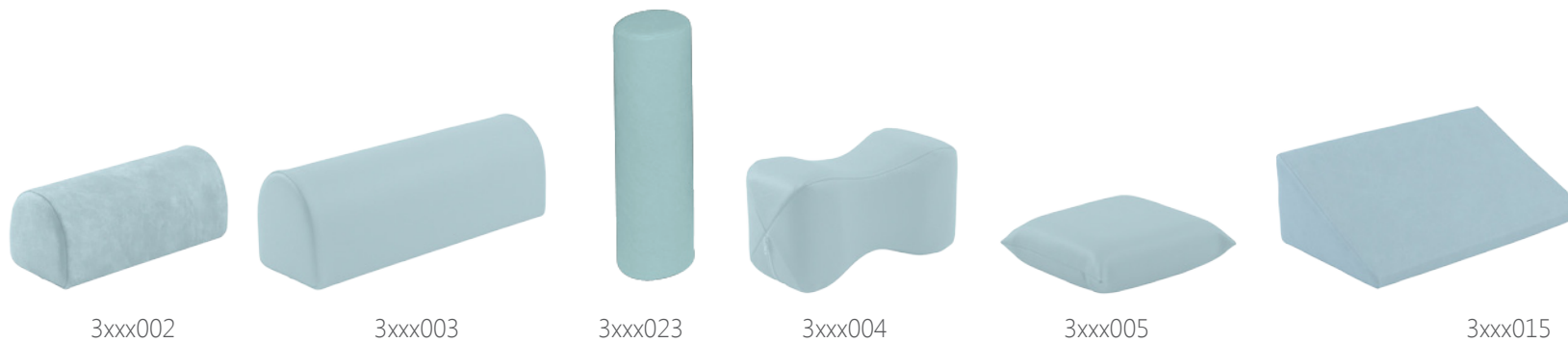
NATURAL	LIFESTYLE	EXECUTIVE
 <span>811</span>  <span>851</span>	 <span>410</span>  <span>408</span>	 <span>012</span>  <span>213</span>  <span>199</span>  <span>204</span>  <span>169</span>  <span>170</span>

# ACCESSORIES



# Rolls and cushions

3xxx002	Halfroll, flat bottom, small, especially for the ankle	28x9x11 cm
3xxx003	Halfroll, flat bottom, large	56x16x18 cm
3xxx023	Massage roll	50x Ø15 cm
3xxx004	Neck cushion, hourglass type	30x15 cm
3xxx005	Massage cushion	30x28x8 cm
3xxx015	Wedge shaped cushion	50x30x15 cm



Available in all colours shown below

NATURAL	LIFESTYLE	EXECUTIVE

# ACCESSORIES





## Rolls and cushions

1550813 Plug for nosehole, triangular shaped <sup>(1)</sup>

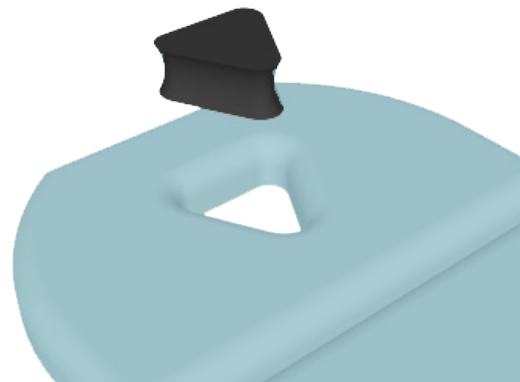
16,5 x 21 cm

3445297 Wedge shaped, Kaltenborn, rubber model <sup>(1)</sup>

22,5 x 10,5 x 8,5 cm

3446161 Support bag with sand 1,2 kg <sup>(2)</sup>

15x25 cm



1550813

(1) = only available in black  
(2) = only available in grey

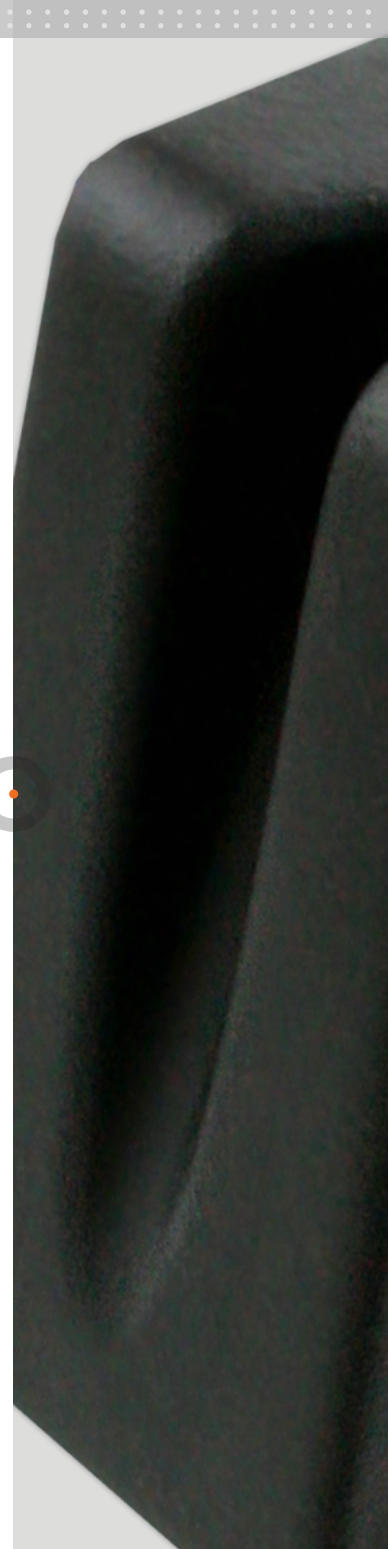


3445297



3446161

## ACCESSORIES



## Couch covers

3445240	Couch cover, with a cutaway for the nose	blue
3445241	Couch cover, with a cutaway for the nose	bordeaux
3445242	Couch cover, with a cutaway for the nose	white
3445244	Couch cover, with a cutaway for the nose	jade
3445249	Couch cover, with a cutaway for the nose	dark grey
3445250	Couch cover, with a cutaway for the nose	royal blue
3445261	Couch cover, without a cutaway for the nose	blue
3445034	Couch cover, without a cutaway for the nose	bordeaux
3445267	Couch cover, without a cutaway for the nose	white
3445262	Couch cover, without a cutaway for the nose	jade
3445248	Couch cover, without a cutaway for the nose	dark grey
3445247	Couch cover, without a cutaway for the nose	royal blue
3445259	Elastic straps for couch cover with clip fittings at both ends, set of 3	

## ACCESSORIES



3445240  
3445261



3445241  
3445034



3445242  
3445267



3445244  
3445262



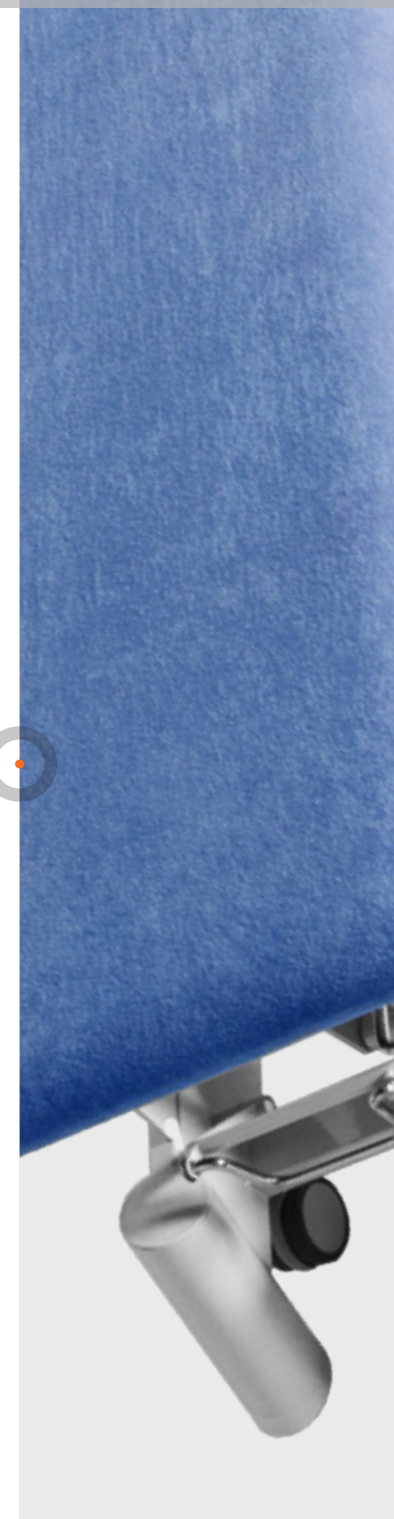
3445248  
3445249



3445247  
3445250



3445259



## Gynaecology accessories

## ACCESSORIES

- 1550806 Fixation rail for gynaecological set (and for fixation horn shoulder, armpit)
- 1550807 Fixation rail for gynaecological set (and for fixation horn armpit)
- 1550810 Gynaecological Comfort set<sup>(1)</sup>
- 1550805 Gynaecological set<sup>(1)</sup>



1550806



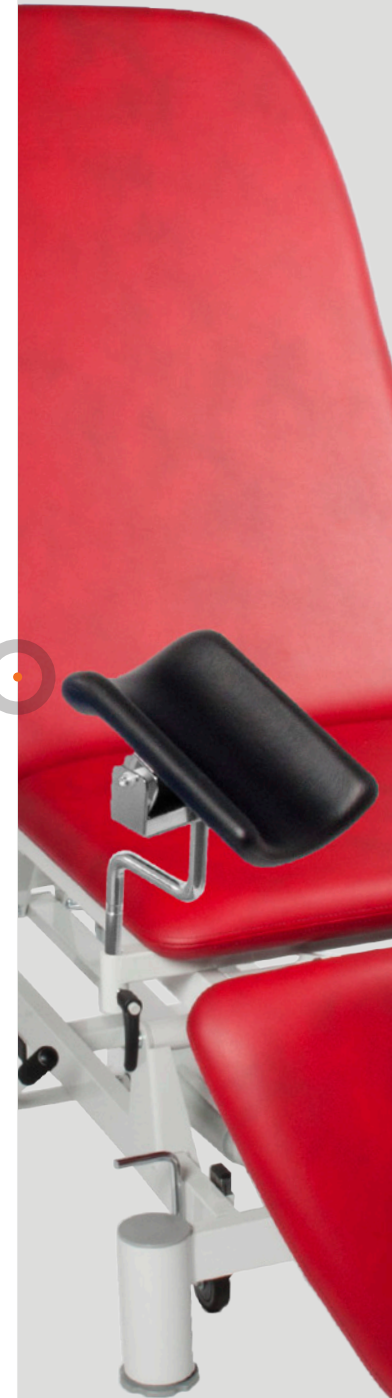
1550807



1550810



1550805



(1) = Requires 1550806 or 1550807



## Manumed ST

The budget-friendly Manumed

Enraf-Nonius B.V. | Vareseweg 127 | 3047 AT Rotterdam | The Netherlands  
www.enraf-nonus.com | info@enraf-nonus.nl | + 31 - ( 0 ) 10 20 30 600



PARTNER FOR LIFE