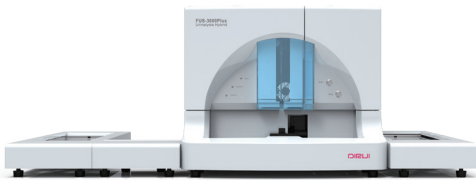


FUS-3000Plus

Urinalysis Hybrid



| Technical Specification | |
|-------------------------|--|
| Sample Type | Urine |
| Test Items | Formed Elements Items : NRBC, MIRBC, ARBC, SRBC, OSRBC, WBC, WBCC, SQEP, RTEP, TREP, HYAL, GRAN, WAXY, BROAD, OCAS, BACI, SUCO, HYST, BYST, CAOX, URIC, MAPH, OCRY, SPRM, MUCS |
| | Chemistry Items : UBG, BIL, KET, PRO, BLD ,LEU, NIT, GLU, pH, SG, VC(Optional), MALB(Optional), CRE(Optional), CA(Optional), A/C (Calculation), P/C (Calculation) |
| | Physics Items(Optional): Conductivity, Specific Gravity, Color, Turbidity, Osmolality (Calculation) |
| Principles | Formed Elements: Flow Imaging Technique |
| | Chemistry: Photoelectric Colorimetry |
| Sample loading | 50/270 Samples (Optional) |
| Throughput | Hybrid Mode/ Formed Element Mode: 120 Tests/ Hour |
| | Chemistry Mode: 240 Tests / Hour |
| Min Sample Volume | Hybrid mode / Formed Elements Mode: 3.0 mL, Chemistry mode: 1.5 mL |
| Aspiration Volume | Hybrid mode / Formed Elements Mode: 2.2 mL, Chemistry mode: 0.4 mL |
| Interface | Port: RS-232 Port; LIS: Serial Port & Net Port |
| LIS/ HIS | Bidirectional communication with LIS/HIS |
| | Bar Code Identification |
| Memory Capacity | Internal Bar Code Scanner |
| | External Bar Code Scanner(Optional) |
| Dimension | ≥ 100,000 |
| Weight | 779mm×688mm×584mm(L×W×H)/897mm×1566mm×584mm(L×W×H) with pre-storage & reclaiming tray |
| Operation Temp. | 82kg/115kg with pre-storage & reclaiming tray |
| Humidity | 10-30 ℃ |
| Power | ≤70% |
| | 100~240V 50/60Hz |

DIRUI

DIRUI INDUSTRIAL CO.,LTD.
3333 Yiju Street,New&High Tech. Development Zone Changchun,Jilin 130103,P.R.China
E-mail:marketing@dirui.com.cn Http://www.dirui.com.cn/en
Tel:+86(431)85083721

·Specifications subject to change without notice.
20240903



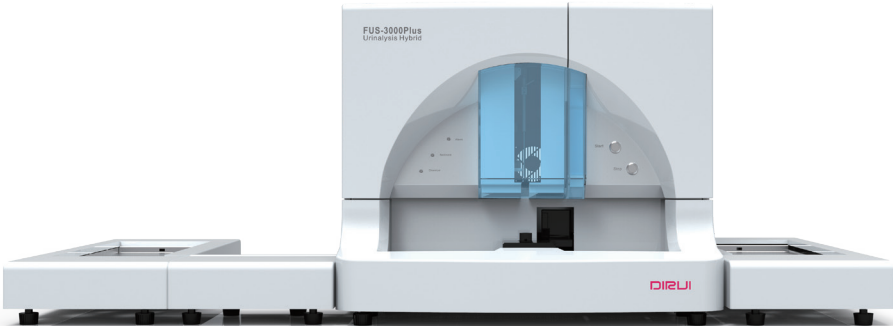
Official WeChat
official account



THE LEADER IN URINALYSIS

FUS-3000Plus

Urinalysis Hybrid



DIRUI

FUS-3000Plus

Urinalysis Hybrid

- Inherited classic flow type micro-imaging technology
- As an integrated instrument, FUS-3000Plus can test all items by one instrument



Advanced Principle
Comprehensive Parameters

Efficient Test
Stable System

ADVANCED PRINCIPLE

By utilizing flow type micro-imaging technology, FUS-3000Plus can provide further accurate and reliable results

Sheath Flow Technology

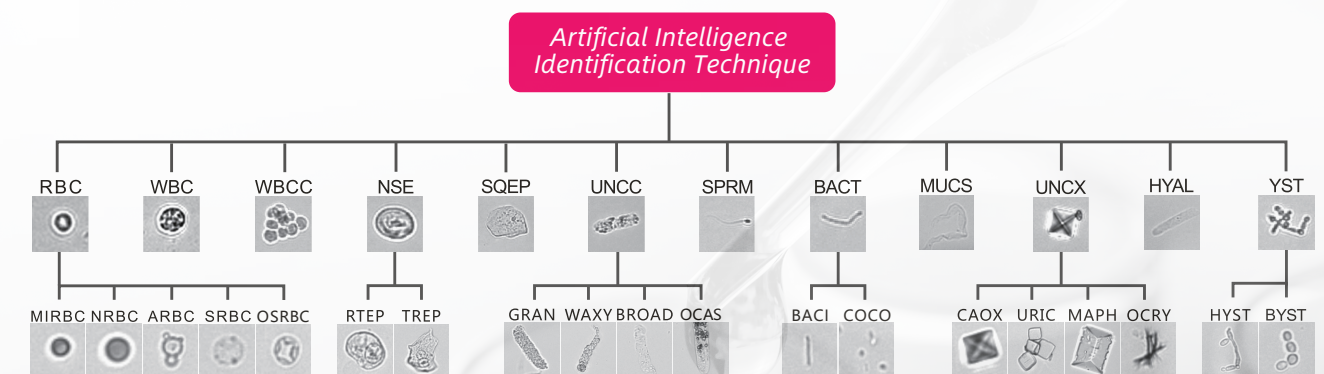
The urine formed element is directed by the sheath liquid with a single layer to avoid gather or overlap.

High-Speed Photograph Technology

More than 2000 frames images are taken with 600 times magnification.

Artificial Intelligent Identification(All)

All makes the result highly concordant with Golden Standard.



Identification and classification

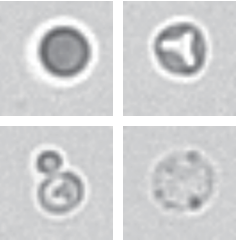
COMPREHENSIVE PARAMETERS

FUS-3000Plus flexibly provides 45 comprehensive report parameters, fully satisfied clinical needs of urinalysis.

Formed Element Parameter

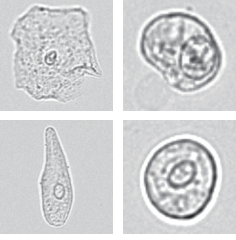
- FUS-3000Plus breaks through the technique difficulties of automatic analysis in urine formed element and provides 25 formed element parameters .
- Particles sub-classification offers highly valuable reference for clinical diagnosis

Abnormal RBC



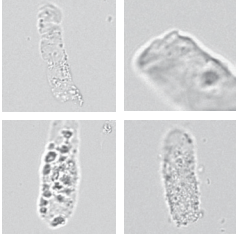
Abnormal RBC alarm automatically when uniformity, non-uniformity or miscibility RBC are identified
Abnormal RBC ratio prompts the hematuresis resource

Epithelial Cell



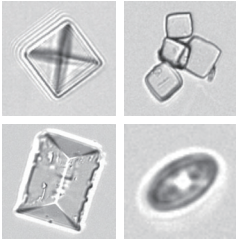
Abnormal Epithelial Cell result indicates the lesion position of urinary system diseases, such as urinary tract inflammation, nephric tubule acute necrosis and urocystitis, etc

Pathological CAST



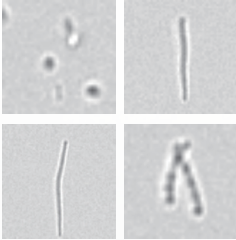
Pathological CAST indicates kidney parenchymal damage such as glomerulonephritis, glomerulosclerosis and nephrotic syndrome, etc

Crystal



Crystal sub-classification may indicate kidney stone and even metabolic disorders

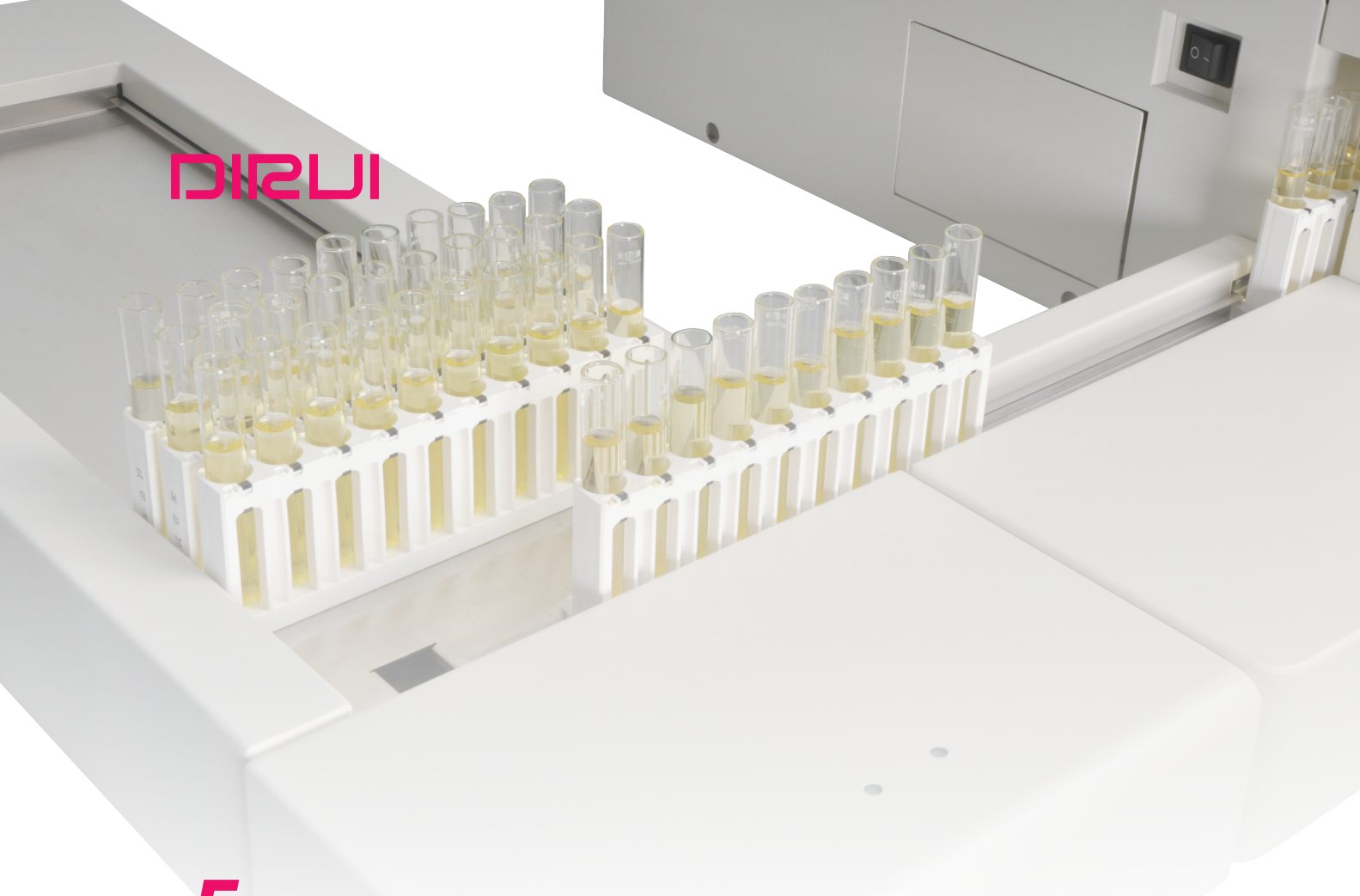
Bacterial



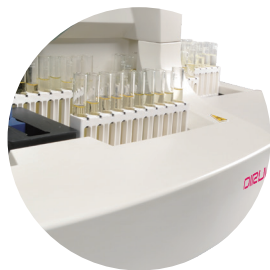
Bacterial is identified and calculated automatically
Urinary Tract Infection(UTI) is alerted based on bacterial, WBC, RBC and chemistry result

Chemical and Physical Parameter

- 16 chemical parameters + 4 physical parameters
- As the earliest warning indication of chronic kidney disease,ACR has been listed as the diagnosis and staging of early kidney disease, chronic kidney disease by authoritative international guidelines,which is superior to microalbumin
- Conductivity reflects the concentration of kidney and has differential diagnosis of DM(diabetes mellitus) and DI(diabetis insipidus)



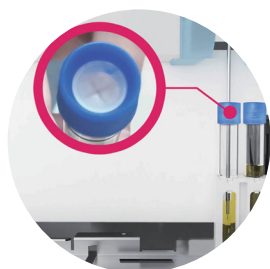
EFFICIENT TEST



Sieve test function: According to the chemical result activate formed element test intelligently



One key operation: Execute all works with only one key



Sample absorption: No need to open the test tube cap.

FUS-3000Plus
Urinalysis Hybrid

STABLE SYSTEM



Complete quality assurance system
Complete calibrator, quality control, strip & reagent
Specific and complete calibration system
Build up stable qualified test system